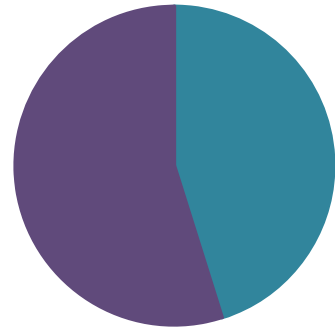


Corporate Parenting

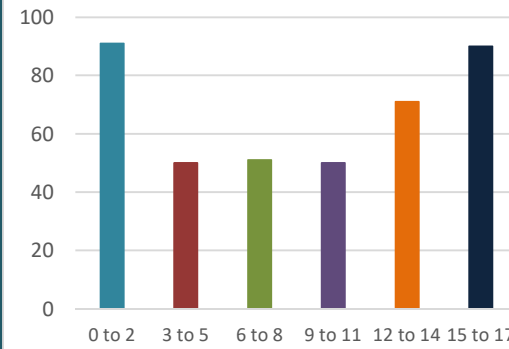
Children in Our Care - 2nd Oct 2019

Gender of Children in Our Care



Female	182	45%
Male	221	55%
Total CIOC	403	

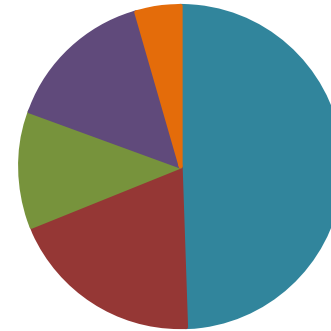
Age Profile of Children in Care



0 to 2	91	9 to 11	50
3 to 5	50	12 to 14	71
6 to 8	51	15 to 17	90

Entering Care Oct 18 to Sept 19

Age of children entering care



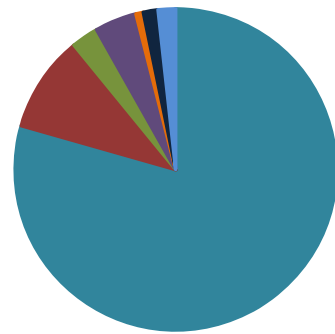
0 to 2	89 (50%)	11 to 15	27 (15%)
3 to 6	35 (19%)	16+	8 (4%)
7 to 10	21 (12%)		

Children in Our Care since 2008

Number of Children in our care since 2008



Ethnicity of Children in Our Care



White/UK	320	79%
Asian Pakistani	39	10%
Other	11	3%
Mixed	17	4%
Black	3	1%
White Other	6	1%
Asian Other, incl Indian	7	2%

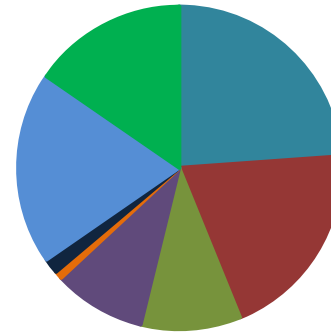
Where are children in care placed?

Foster Placements (in-house)	143
Foster Placements (agency)	68
Placed with Parents	49
Friends & Family	58
Children's Homes (agency)	28
Adoptive Placements	14
Res Accom Not Subject to CH Regs	16
Other	19
Children's Homes (in-house)	4
NHS	1
Independent Living	0
Residential School	2
Secure	0
Prison/HMYOI	1

# Children in Our Care with a Disability	24
% Children in Our Care with a Disability	6%

Leaving Care Oct 18 to Sept 19

Destinations of Care Leavers



Reached 18	31 (24%)
Returned to parents	26 (20%)
Moved in with relatives	13 (10%)
Other reason	12 (9%)
Moved into supp.accomodation	1 (1%)
Child Arrangement Order	2 (2%)
Adopted	25 (19%)
Special guardianship	20 (15%)

Entering/Leaving Care since 2001

	Entering	Leaving	Net
Total in 2001	111	95	16
Total in 2002	103	117	-14
Total in 2003	131	134	-3
Total in 2004	102	104	-2
Total in 2005	119	100	19
Total in 2006	94	104	-10
Total in 2007	97	92	5
Total in 2008	114	104	10
Total in 2009	151	94	57
Total in 2010	112	123	-11
Total in 2011	155	128	27
Total in 2012	125	149	-24
Total in 2013	123	120	3
Total in 2014	89	125	-36
Total in 2015	163	139	24
Total in 2016	170	139	31
Total in 2017	161	143	18
Total in 2018	162	153	9
Total in 2019	117	100	17

*Please note this table is calculated by calendar years

Age Profile of Children in Care and the length of time children have been in care

Time in Care (in yrs)	Current Age																	Total	
	0	1	2	3	4	5	6	7	8	9	10	11	12	13	14	15	16		17
0-1	40	11	15	10	7	6	9	2	8	3	4	2	3	4	4	7	2	4	141
1-2		12	8	4	4	3	5	2	4	1	5	1	6	3		2	2	7	69
2-3			5	3	2	3	3	2	5	2	1	4	2	1	3	2	4	5	47
3-4				3	4		2	3	4	2	5	2	2	4	1	3	1	5	41
4-5					1				2		1	3	3	3	1	2	1	17	17
5-6						1					2	1	2	1	2	3		11	11
6-7							1			1	2	3	2	1	1	5	1	17	17
7-8								1		1	3	3	3	3	5	3	1	2	21
8-9									1					2	3	3	4	2	15
9 yrs & longer											3		1	3	1	7	1	8	24
Total	40	23	28	20	18	12	20	9	22	12	20	18	23	26	22	35	21	34	403

Performance compared with national, regional and comparator averages

	Current - BwD	Comparator Median	Regional Average	National Average
Number of children in our care (CIOC) per 10,000 0-18 year old population	104	98	91	64
% in foster care	67%	73%	69%	73%
Of which - in-house provider or family and friends approved care	50%			48%
Of which - Other provider	17%			25%
% in adoption placements	3%	3%	2%	3%
% in residential/resi schools/secure/other residential provision	12%	12%	12%	13%
% placed at home with parents	12%	8%	13%	6%
Placement Stability (% of CIOC with 3 placements or more in a yr)	12.7%	9%	10%	10%
Placement Stability (% of CIOC in same placement for past 2 yrs & in care for 2.5 yrs+)	64%	71%	71%	70%
% of Care Leavers aged 19-21 years old in Education, Employment or Training	42%	51%	50%	51%
% of Care Leavers aged 19-21 years old in suitable accommodation	95%	88%	87%	84%
Adoption Scorecard (rolling 3 yrs) - entry into care to adoption placement (days)	431			520
Adoption Scorecard (rolling 3 yrs) - Placement Order to matching (days)	151			220
Average Caseload in Assessment and Safeguarding Teams	28.9			
Average Caseload in Children in our Care Teams	21.7			
Number of unaccompanied asylum seekers in care	2			

*Comparable information as at March 2018